

DIVINE



Pearl

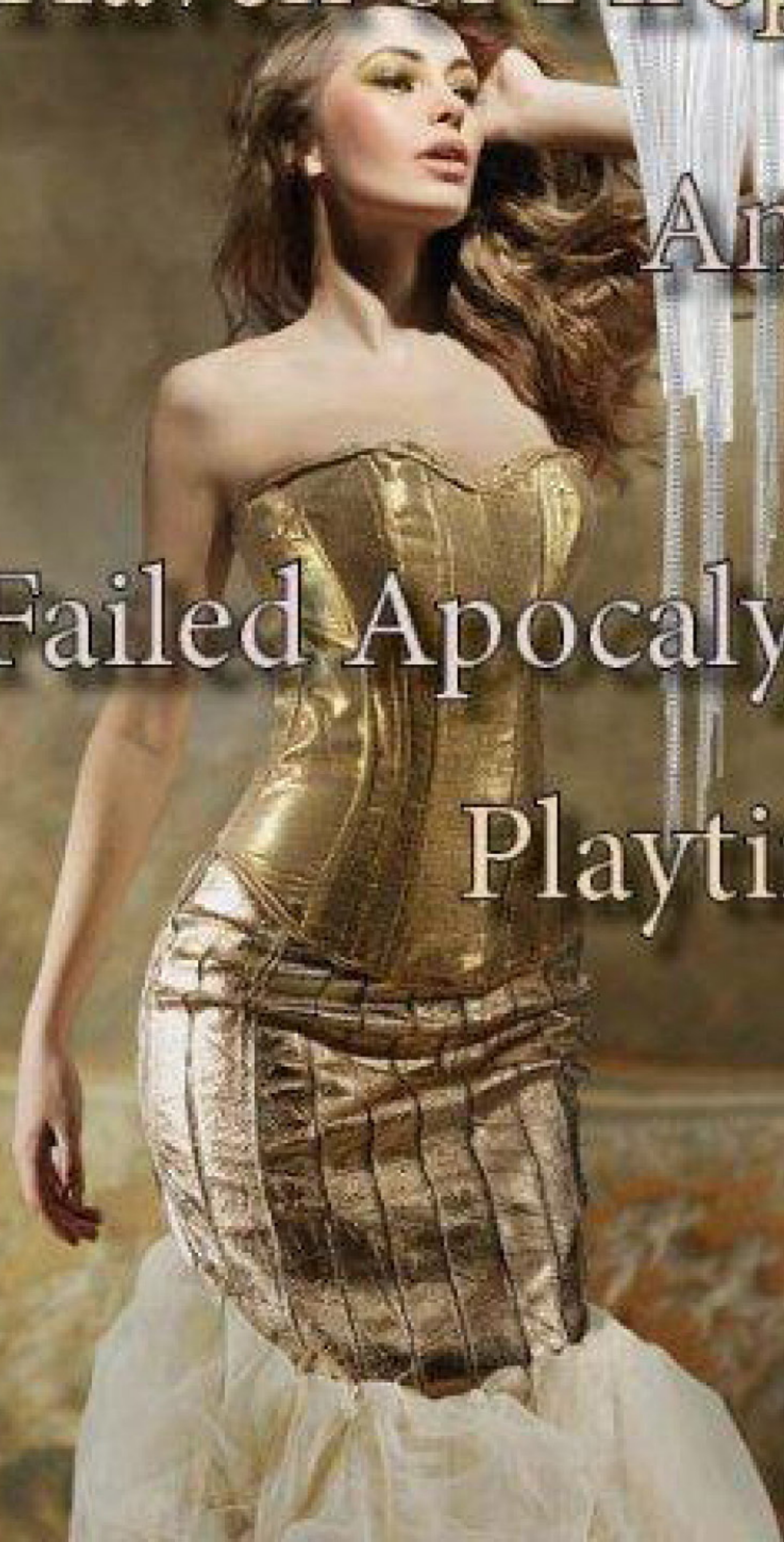
January 2013

Haven of Fireplaces

Anger Takes Shape

Failed Apocalypses

Playtime for Dreamers





Written by Icell Sharafeldin
Images Courtesy of Kamini Ezralow

Bronze

India, South Africa, Germany, London and Hong Kong; all experienced by one person in one lifetime. Kamini Ezralow uses her various cultural influences to present *Bronze* her first furniture collection following several highly received interior design projects. Her simple style and attention to detail offer us the true definition of luxury pieces.

Englishmen love Indian curry, Americans love Italian pizza and everyone loves Chinese noodles! Globalization and ease of travel have allowed different countries to share numerous cultural aspects including education, religious beliefs, food and even traditional home styles. Every culture has their own identifiable fingerprint when it comes to home decor, for example Classic European décor generally feature deep wood tones and silhouettes such as wing-bang chairs, claw footed tables while Moroccan homes include textured walls, terracotta flooring and canopies. Interior designers are the painters and the different styles are their colors that blend, sprinkle

or segregate into the perfect fit for our homes. As an accomplished interior designer, Kamini Ezralow incorporates different design elements from the many cultures that she has been exposed to. With roots in India and South Africa, childhood in Hong Kong, educated at the German school, Gap year in Paris then University and design school in London, Ezralow is the definition of 'Global'. Earlier in her career, she was asked to take on the role of Managing Director and Creative Director of *Intarya*, a leading UK property developer. The natural development of her career saw her establish a London-based studio in 2012 named Ezralow Designs.

Ezralow's current projects include glamorous spaces such as refurbishing a yacht, a palace in Saudi Arabia and a boutique hotel in Europe, which run along her blue chip residential projects in Dubai, London and Hong Kong. Her signature classical designs with a modern edge puts Ezralow in global demand and gaining high recognition such as the six awards won by her first yacht interior, *Celestial Hope*. The awards included the Super yacht plaudit and the Asia Boating Award for **Most Innovative Interior Design**. The latest of Ezralow's endeavors has also received positive reviews as her first furniture collection, *Bronze*, was presented at the Salone Internazionale del Mobile in Milan in April

2012. She collaborated with well-renowned Italian family firm, Orsi, to produce her collection which features the expertise of various craftsmen such as metal workers, master ironmongers, wood carvers, bronziers, cabinet makers, lacquer workers and specialist upholsterers. The eight-piece Bronze collection aims to combine various materials to create, not just aesthetically appealing furniture, but also practical, comfortable and functional pieces. With a continuously demanding economy, people realize how important practicality is, and adding function to furniture has become a global trend carried out by major design companies in order to satisfy the various tastes and needs of the consumer.





Quality of material is also another deal-breaker for the consumer; most intelligent buyers are willing to invest in the quality of their purchases because it guarantees a longer lifetime, less damage caused by natural elements, softer feel for fabrics and vibrant finishing. Italy is one of the best sources of high quality material some of which Ezralow has included in her Bronze collection to convey the importance of quality. Antiqued bronze with grey-stained sycamore, dyed parchment, mirror, lacquer, cashmere by Loro Piana and silk fabrics by Donghia, have all been used

to ensure that each piece is good to the core. Keeping with Ezralow's signature style, the collection follows a clean minimalist style with a focus on detailing; bronze elements are featured as details in each of the pieces. Only the first half of the collection was presented this year, next year the second half of the Bronze collection will be featured at the Salone Internazionale del Mobile. For 2012, we are firstly introduced to a woven cashmere bed head, the dark wood frame contrasts with the white cashmere fill this adds definition and makes the white cashmere come alive.





The detailed bronze border in between the two materials creates an earthy feel to the bed head along with the woven cashmere, which is reminiscent of a straw basket, conveys a feeling of warmth and intrigue. The collection also features a sycamore-and-parchment sideboard, parchment-covered dining chairs and a diamond-veneered dining table. The rectangular tabletop and legs of the dining table, and their box-like assembly make a strong statement and the credenza uses a crackle-finish which adds texture and depth. Sycamore bedside tables beautifully painted folding screen by artist Piero Centofanti and a set of 3 pedestals with mirrored tops finish off the Bronze collection.

The pedestals are so simple yet so attractive. The differences between their heights and the bronze detailing are very modern-chic while the thickness of their tops compared to their skinny legs, similar to a runway model, is very appealing and eye catching. The second half of Ezralow's Bronze collection promises more of these simple yet beautifully detailed designs such as upholstered pieces, coffee tables and nesting tables. Diverse cultural influence, functional elements, first class quality materials, and extreme attention to detail are some of the traits Ezralow exploits to present some of the most luxurious pieces to a generation that adds more to the value of an object than merely its price.